

GENERAL ENGINEERING CONSULTANT (GEC) - RECOMMENDATION



PROJECT GOALS

Project implementation that is **FAST, COST-EFFECTIVE** and **RESPONSIVE** to the goals and objectives of the communities it will serve.



TEAM OF EXPERTS



MINIMAL MANAGEMENT

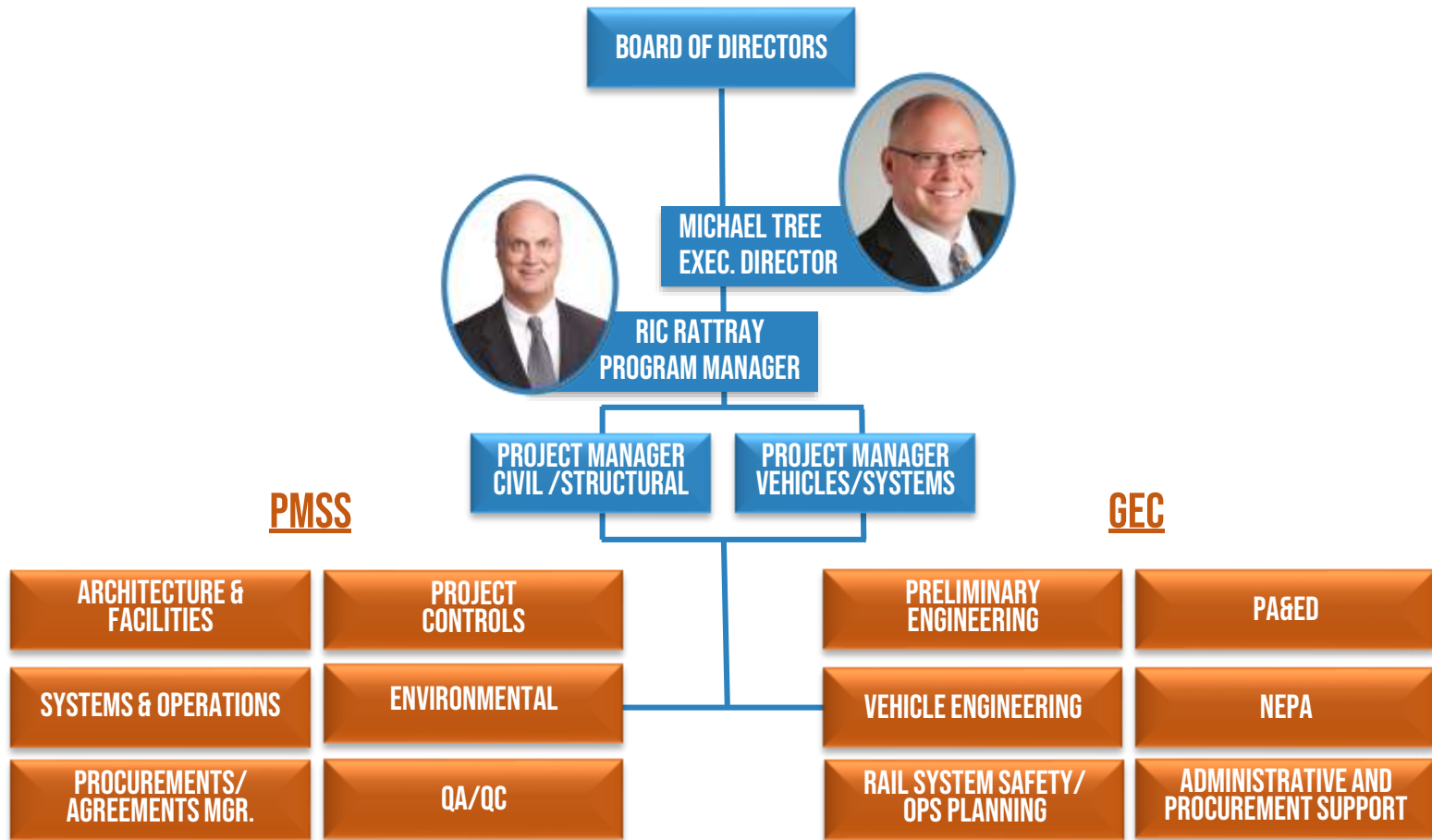


COLLABORATIVE & EFFICIENT



LOW OVERHEAD

VALLEY LINK RAIL ORGANIZATION



SCOPE AND SCHEDULE



GEC – SCOPE OF WORK

INITIAL SCOPE

- Preliminary Engineering
- Caltrans I580 Coordination
- Federal Environmental (NEPA)
- Vehicle Selection Support
- Administrative and Procurement Support

OPTIONAL SCOPE

- Final Design
- Construction Management

SELECT GEC AGREEMENT TERMS



REPLACEMENT OF KEY PERSONNEL

- Downward adjustment of fixed fee by-25%
 - Unacceptable qualifications
 - Replacement without approval



PROJECT CONTROLS

- Web-based project controls system
- Real-time labor expenditures
- No overrun surprises